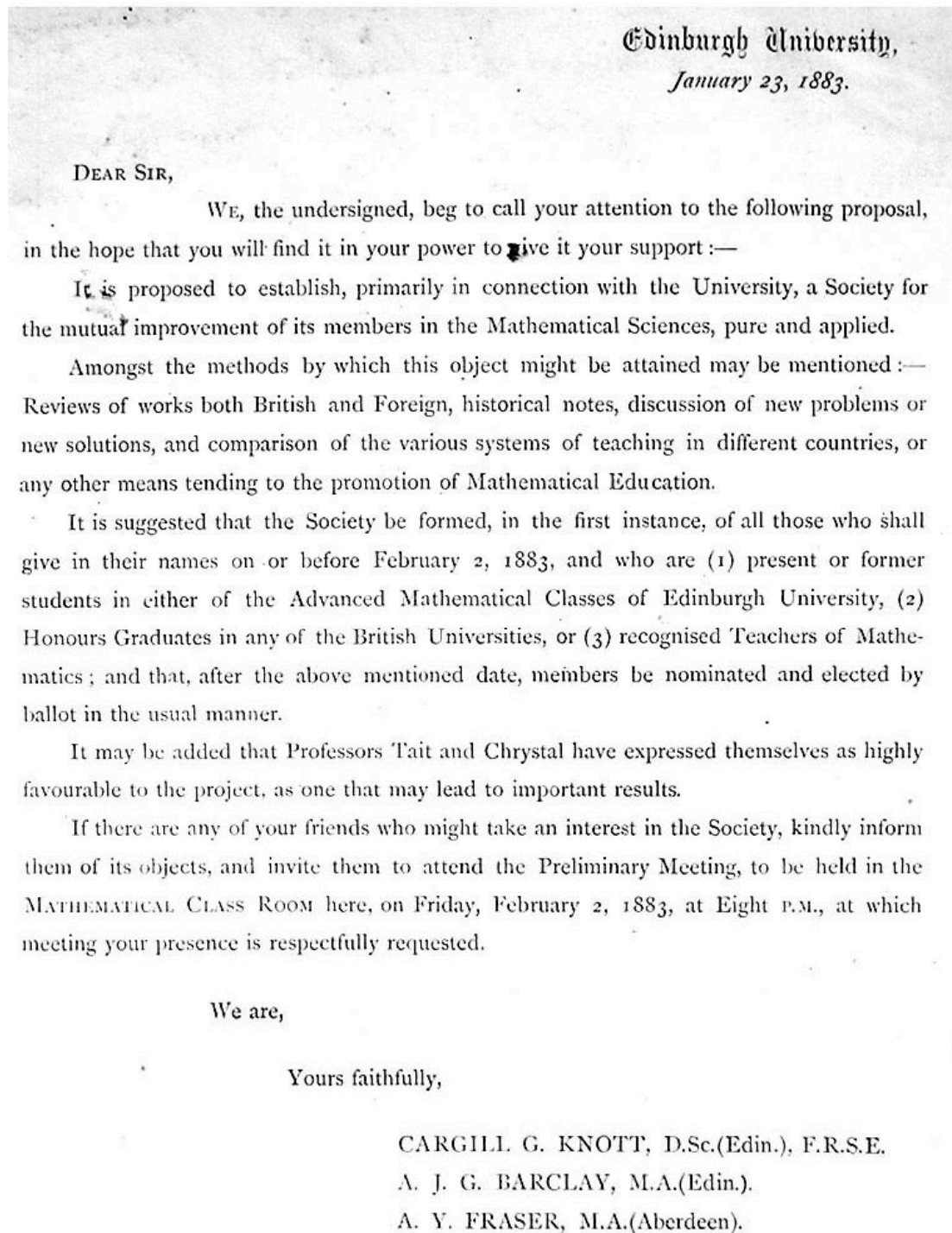


**125<sup>th</sup> Anniversary**

The Edinburgh Mathematical Society was founded in February 1883. Fraser and Barclay, mathematics masters at George Watson's College, together with Knott, an Assistant to the Professor of Natural Philosophy in Edinburgh University, issued a circular *to gentlemen in Edinburgh, in Cambridge and throughout Scotland generally whom they deemed likely to take an interest in such a Society* calling for a Mathematical Society to be set up. The circular is shown below.



This booklet contains short accounts of about 200 (mostly) early members of the Edinburgh Mathematical Society mainly taken from the 1929 membership list. More detailed biographies of these members can be found in the MacTutor History of Mathematics archive.

The details given in the short notes below give an idea of how much the Society has influenced the development of Mathematics, not only in Scotland but in the rest of the world.

Lists of the Society's Officers (Presidents, Treasurers and Secretaries) and of the founder members (February 1883) are at the end of this booklet.

A Web version of this booklet is available at:

<http://www-history.mcs.st-and.ac.uk/ems/booklet.html>

with links to the longer biographies.

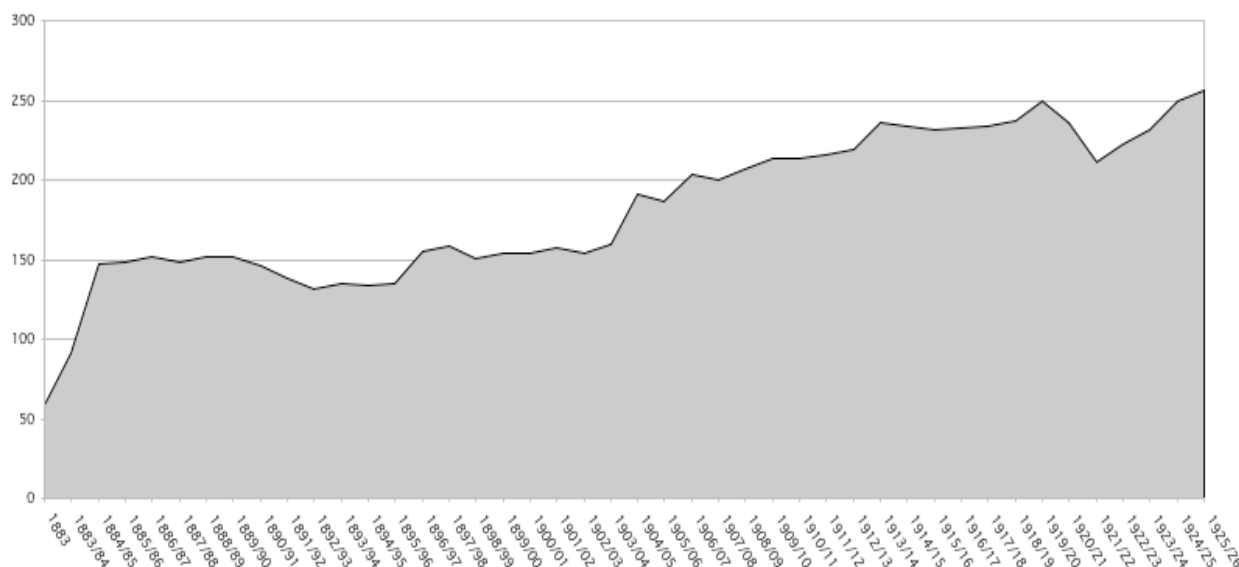
The first 50 years of the Society's minutes are available on the Web at:

<http://www-history.mcs.st-and.ac.uk/ems/>

both as facsimiles of the original hand-written entries and as transcriptions. These can be searched for individual names or phrases.

The graph below shows the increase in membership of the Society in the years from 1883 to 1926.

Members of the EMS





**Robert Rankin proposing Edward Copson for Honorary Membership of the EMS**

St Andrews, 1979

MARIT HARTVEIT  
JOHN O'CONNOR  
EDMUND ROBERTSON

January 2008

### **Edwin P Adams**

Born 1878 at Prague, Bohemia, Austro-Hungary (now Czech Republic); Died 1956

EMS membership: 1915

Edwin Adams studied at Harvard, Göttingen and Cambridge and became Physics Professor at Princeton. He is best known for his translations of some of Einstein's lectures.

*More details at:*

[http://www-history.mcs.st-and.ac.uk/Biographies/Adams\\_Edwin.html](http://www-history.mcs.st-and.ac.uk/Biographies/Adams_Edwin.html)

### **John Airey**

Born 1868 at Hunslet, Leeds; Died 1937

EMS membership: 1913

John Airey graduated from Cambridge and became Principal of the West Ham Technical Institute. He is best known for his work in producing tables of mathematical functions.

*More details at:*

<http://www-history.mcs.st-and.ac.uk/Biographies/Airey.html>

### **Alec Aitken**

Born 1895 at Dunedin, New Zealand; Died 1967

EMS membership: 1923 1967 (Hon)

Alec Aitken served at Gallipoli and in France with the New Zealand army. His experiences here affected him for the rest of his life. He studied at Edinburgh University after World War I and was then given a post there. He had a prodigious memory and calculating ability. He worked in Statistics, Numerical Analysis and Algebra and made important contributions in all these areas. He became President of the EMS in 1931 and 1951 and an honorary member in 1967.



*More details at:*

<http://www-history.mcs.st-and.ac.uk/Biographies/Aitken.html>

### **V Ramaswami Aiyar**

Born 1871 at Coimbatore district, India; Died 1936

EMS membership: 1895

Ramaswami Aiyar was an enthusiastic amateur mathematician who worked as a civil servant in India. He was a founder of the Indian Mathematical Society.

*More details at:*

<http://www-history.mcs.st-and.ac.uk/Biographies/Aiyar.html>

### **John Alison**

Born 1861 at Kirkcaldy, Fife; Died 1952

EMS membership: 1884

John Alison graduated from Edinburgh University and taught at George Watson's College in Edinburgh, He became head of the Glasgow United Free Church Training College and later returned to George Watson's as headmaster. He became Treasurer of the EMS in 1885 and President in 1892.

*More details at:*

<http://www-history.mcs.st-and.ac.uk/Biographies/Alison.html>

### **Robert Allardice**

Born 1862 at Edinburgh; Died 1928

EMS membership: 1883

Robert Allardice studied at Edinburgh University and was then appointed assistant to Professor Chrystal there. He was a founder member of the EMS and became President in 1890. He left Edinburgh to become Professor at Stanford University in California. He worked in Geometry.

*More details at:*

<http://www-history.mcs.st-and.ac.uk/Biographies/Allardice.html>

### **James Archibald**

Born 1862 at Edinburgh; Died 1925

EMS membership: 1889

James Archibald graduated from Edinburgh University and eventually became headmaster of Dalry School Edinburgh. He became Treasurer of the EMS in 1899 and President in 1906.

*More details at:*

[http://www-history.mcs.st-and.ac.uk/Biographies/Archibald\\_James.html](http://www-history.mcs.st-and.ac.uk/Biographies/Archibald_James.html)



### **Raymond Archibald**

Born 1875 at Stewiacke, Colchester County, Nova Scotia, Canada; Died 1955

EMS membership: 1909

Raymond C Archibald studied in Canada, at Harvard and at Strasbourg. He spent most of his career at Brown University in Rhode Island. His main interests were in the History of Mathematics.

*More details at:*

<http://www-history.mcs.st-and.ac.uk/Biographies/Archibald.html>

### **William Arthur**

Born 1894 at Fergushill, near Kilwinning, Ayrshire; Died 1979

EMS membership: 1920

William Arthur graduated from the University of Glasgow and after serving in World War I became a lecturer at Glasgow. He became President of the EMS in 1928.

*More details at:*

<http://www-history.mcs.st-and.ac.uk/Biographies/Arthur.html>

### **Michael Atiyah**

Born 1929 at London

EMS membership: 1979 (Hon)

Michael Atiyah studied at Cambridge and became a Fellow of Trinity College there. He held professorships at Princeton and Oxford and became Master of Trinity College Cambridge. He works in Topology and Geometry and is best known for his work on K-theory and the Atiyah-Singer Index Theorem. He was awarded a Fields Medal in 1966. He became an honorary member of the EMS in 1979.



*More details at:*

<http://www-history.mcs.st-and.ac.uk/Biographies/Atiyah.html>

### **A A Krishnaswami Ayyangar**

Born 1892 at Attipattu, Chingleput district, Tamil Nadu, India; Died 1953

EMS membership: 1923

Krishnaswami Ayyangar was an Indian mathematician who worked in Mysore. He produced important work on the history of Hindu mathematics.

*More details at:*

<http://www-history.mcs.st-and.ac.uk/Biographies/Ayyangar.html>

### **Bevan Braithwaite Baker**

Born 1890 at Edinburgh; Died 1963

EMS membership: 1920

Bevan Braithwaite Baker graduated from University College London. After service in World War I he became a lecturer at Edinburgh University and was Secretary of the EMS from 1921 to 1923. He left to become Professor at Royal Holloway College London.

*More details at:*

<http://www-history.mcs.st-and.ac.uk/Biographies/Bevan-Baker.html>

### **Henry Baker**

Born 1866 at Cambridge; Died 1956

EMS membership: 1926 (Hon)

Henry Baker spent his whole life in Cambridge and worked on Geometry and Analysis and inspired a younger generation of geometers.. He was made an honorary member of the EMS in 1926.

*More details at:*

<http://www-history.mcs.st-and.ac.uk/Biographies/Baker.html>



### **Andrew Jeffrey Gunion Barclay**

Born 1849 at Hawick, Roxburghshire; Died 1943

EMS membership: 1883

Andrew Barclay graduated from Edinburgh University and then taught at George Watson's College in Edinburgh. With Fraser and Knott he was one of the writers who originally proposed the founding of the EMS. He was the third EMS president in 1884.

*More details at:*

<http://www-history.mcs.st-and.ac.uk/Biographies/Barclay.html>

### **Charles Glover Barkla**

Born 1877 at Widnes, Lancashire; Died 1944

EMS membership: 1913

Charles Barkla was an influential English physicist who became professor of Natural Philosophy in Edinburgh. He was awarded the Nobel Prize for Physics in 1917 for his work on X-ray spectroscopy.

*More details at:*

<http://www-history.mcs.st-and.ac.uk/Biographies/Barkla.html>



### **Frederick Bath**

Born 1900 at Islington, London; Died 1982

EMS membership: 1928

Frederick Bath graduated from Bristol and Cambridge and held posts at King's College London, University College Dundee, St Andrews and Edinburgh. He worked in Geometry. He was president of the EMS in 1938 and 1939.

*More details at:*

<http://www-history.mcs.st-and.ac.uk/Biographies/Bath.html>



### **Carruthers Beattie**

Born 1866 at Waterbeck, Dumfriesshire; Died 1946

EMS membership: 1891

John Carruthers Beattie graduated from Edinburgh University and studied at Munich, Vienna, Berlin and Glasgow. He became Professor of Applied Mathematics and Experimental Physics at the University of Cape Town and was later Vice Chancellor and Principal of the University. He was knighted in 1920.

*More details at:*

<http://www-history.mcs.st-and.ac.uk/Biographies/Beattie.html>



### **Robert J T Bell**

Born 1876 at Falkirk, Stirlingshire; Died 1963

EMS membership: 1899

Robert Bell graduated from Glasgow University. He was appointed to a professorship at the University of Otago in New Zealand. He worked in Geometry and was editor of the EMS *Proceedings* for several years.

*More details at:*

[http://www-history.mcs.st-and.ac.uk/Biographies/Bell\\_Robert.html](http://www-history.mcs.st-and.ac.uk/Biographies/Bell_Robert.html)

### **William Berwick**

Born 1888 at Dudley Hill (near Bradford); Died 1944

EMS membership: 1919

William Berwick studied at Cambridge and lectured at Bristol, Bangor and Leeds before returning to Cambridge and eventually became Professor at Bangor. He worked in algebraic number theory. His widow endowed the Berwick prizes of the London Mathematical Society in his name.

*More details at:*

<http://www-history.mcs.st-and.ac.uk/Biographies/Berwick.html>

### **George Birkhoff**

Born 1884 at Overisel, Michigan, USA; Died 1944

EMS membership: 1926 (Hon)

George Birkhoff was an American mathematician who was educated at Chicago and Harvard. He became a Professor at Harvard. His most important work was the Ergodic Theorem he discovered in 1931. He spoke at the EMS Colloquium in St Andrews in 1926 and was elected an honorary member of the society.

*More details at:*

<http://www-history.mcs.st-and.ac.uk/Biographies/Birkhoff.html>



### **F F P Bisacre**

Born 1885 at Tunbridge, Kent; Died 1954

EMS membership: 1925

F F P Bisacre was an engineer who was educated at Cambridge and worked for the Edinburgh publishers Blackie with whom he published a Calculus textbook. He wrote some research papers on X-ray diffraction.

*More details at:*

<http://www-history.mcs.st-and.ac.uk/Biographies/Bisacre.html>

### **Edward Blades**

Born 1875 at Armadale, West Lothian; Died 1953

EMS membership: 1905

Edward Blades graduated from Edinburgh University. He held posts at Moray House Training College, at Heriot Watt College and at George Watson's Ladies' College, all in Edinburgh. He became Director of Education for West Lothian. After he retired he made contributions to Army Education.

*More details at:*

<http://www-history.mcs.st-and.ac.uk/Biographies/Blades.html>

### **James Bolam**

Born 1839 at Newcastle; Died 1930

EMS membership: 1883 1923 (Hon)

James Bolam was educated at Newcastle. He became head of the Government Navigation School (later the Leith Nautical College). He was a founder member of the EMS and became an honorary member in 1923.

*More details at:*

<http://www-history.mcs.st-and.ac.uk/Biographies/Bolam.html>

### **Max Born**

Born 1882 at Breslau, Germany (now Wroclaw, Poland); Died 1970

EMS membership: 1938

Max Born had a distinguished career as a mathematician in Germany before he was forced to leave in 1933 to avoid the Nazis. He became a lecturer in Cambridge before being appointed Professor of Applied Mathematics in Edinburgh where he assembled a distinguished research group mainly of European refugees. He received the Nobel Prize for Physics in 1954 for his work on Quantum Mechanics.

*More details at:*

<http://www-history.mcs.st-and.ac.uk/Biographies/Born.html>



### **Margaret E Boyle**

Born 1905 at Kirkden Manse, Angus; Died 1995

EMS membership: 1926

Margaret Boyle graduated from St Andrews and taught mathematics at Dalkeith High School.

*More details at:*

[http://www-history.mcs.st-and.ac.uk/Biographies/Boyle\\_Margaret.html](http://www-history.mcs.st-and.ac.uk/Biographies/Boyle_Margaret.html)



### **William Brash**

Born 1888 at West Calder

EMS membership: 1912

William Brash graduated from Edinburgh University and went on to teaching posts at Stirling, Aberdeen and Inverness.

*More details at:*

<http://www-history.mcs.st-and.ac.uk/Biographies/Brash.html>

### **Raymond Brink**

Born 1890 at Newark, New Jersey, USA; Died 1973

EMS membership: 1919

Raymond Brink was an American mathematician who studied at Kansas State University, Harvard and Paris. He taught at the University of Minnesota though he spent a year in Edinburgh in 1919. He worked on the convergence of series.

*More details at:*

<http://www-history.mcs.st-and.ac.uk/Biographies/Brink.html>

### **Selig Brodetsky**

Born 1888 at Olviopol (near Odessa), Ukraine; Died 1954

EMS membership: 1915

Selig Brodetsky was educated at Cambridge and Leipzig. He became a lecturer at Bristol and later lecturer and professor at Leeds. He worked on fluid flow with particular emphasis on aerodynamics. He was President of the Hebrew University of Jerusalem for a short time.

*More details at:*

<http://www-history.mcs.st-and.ac.uk/Biographies/Brodetsky.html>



### **Thomas Bromwich**

Born 1875 at Wolverhampton; Died 1929

EMS membership: 1902

Thomas Bromwich grew up in South Africa and then graduated from Cambridge. He was Professor of Mathematics in Galway before returning to Cambridge. He made important contributions in both pure and applied mathematics.

*More details at:*

<http://www-history.mcs.st-and.ac.uk/Biographies/Bromwich.html>



### **L E J Brouwer**

Born 1881 at Overschie (now a suburb of Rotterdam), Netherlands; Died 1966

EMS membership: 1954 (Hon)

L E J Brouwer was a Dutch mathematician best known for his topological fixed point theorem. He founded the doctrine of mathematical intuitionism, which views mathematics as the formulation of mental constructions that are governed by self-evident laws. He became an honorary member of the EMS in 1954.

*More details at:*

<http://www-history.mcs.st-and.ac.uk/Biographies/Brouwer.html>



### **Alexander Brown**

Born 1877 at Dalkeith, near Edinburgh; Died 1947

EMS membership: 1898

Alexander Brown studied at Edinburgh and later at Cambridge. He became Professor of Applied Mathematics at the South African College which later became the University of Cape Town. His main contributions were to Geometry.

*More details at:*

[http://www-history.mcs.st-and.ac.uk/Biographies/Brown\\_Alexander.html](http://www-history.mcs.st-and.ac.uk/Biographies/Brown_Alexander.html)

### **Thomas Arnold Brown**

Born 1893 at Edinburgh; Died 1965

EMS membership: 1915

Thomas Brown studied at Edinburgh and Cambridge Universities. He lectured at University College London and became Professor at the University College of the South West which later became the University of Exeter.

*More details at:*

[http://www-history.mcs.st-and.ac.uk/Biographies/Brown\\_Thomas.html](http://www-history.mcs.st-and.ac.uk/Biographies/Brown_Thomas.html)

### **Walter Brown**

Born 1886 at Glasgow; Died 1957

EMS membership: 1911

Walter Brown graduated from Glasgow University and took up a post at Hong Kong University. He was interned by the Japanese in World War II and on his release he returned to Scotland and posts at Glasgow Technical College and Glasgow University. On retirement he travelled extensively in South America and Africa.

*More details at:*

[http://www-history.mcs.st-and.ac.uk/Biographies/Brown\\_Walter.html](http://www-history.mcs.st-and.ac.uk/Biographies/Brown_Walter.html)

### **Alexander Buchan**

Born 1904 at Edinburgh; Died 1976

EMS membership: 1927

Alexander Buchan graduated from Edinburgh University and worked as a teacher at the Royal High School and Gillespie's High School for Girls in Edinburgh. In World War II he was the Commandant of the Air Training Corps in Scotland. He went on to become a lecturer at Moray House College of Education.

*More details at:*

<http://www-history.mcs.st-and.ac.uk/Biographies/Buchan.html>

### **Alexander Burgess**

Born 1872 at Wishaw, Lanarkshire; Died 1932

EMS membership: 1900

Alexander Burgess graduated from Edinburgh and taught at Merchiston Castle School Edinburgh and at Rothesay Academy. He became Rector of the latter school. He became Secretary of the EMS in 1908 and President in 1912 and was responsible for organising the first EMS Colloquium in 1913.

*More details at:*

<http://www-history.mcs.st-and.ac.uk/Biographies/Burgess.html>

### **Raymond Butchart**

Born 1888 at Dundee; Died 1930

EMS membership: 1914

Raymond Butchart graduated from University College Dundee. He was badly wounded in World War I and afterwards returned to Dundee as a lecturer. He was appointed Professor of Mathematics at Raffles College Singapore but died of malaria on his way home on his first leave.

*More details at:*

<http://www-history.mcs.st-and.ac.uk/Biographies/Butchart.html>

### **J Watt Butters**

Born 1863 at Edinburgh; Died 1946

EMS membership: 1886

J Watt Butters graduated from Edinburgh and taught at George Heriot's School and James Gillespie's School in Edinburgh. He became Rector of Ardrossan Academy. He became Secretary of the EMS in 1896 and President in 1900.

*More details at:*

<http://www-history.mcs.st-and.ac.uk/Biographies/Butters.html>

### **Nora Calderwood**

Born 1896 at Blairgowrie, Perthshire

EMS membership: 1919

Nora Calderwood graduated from Edinburgh University and went on to a lectureship at Birmingham University. A prize in algebra at Birmingham is named after her.

*More details at:*

<http://www-history.mcs.st-and.ac.uk/Biographies/Calderwood.html>

### **George Carse**

Born 1880 at Edinburgh; Died 1950

EMS membership: 1902

George Carse studied at Edinburgh and Cambridge and went on to become a Reader in Physics at Edinburgh.

*More details at:*

<http://www-history.mcs.st-and.ac.uk/Biographies/Carse.html>

### **Horatio Carslaw**

Born 1870 at Helensburgh, Dumbartonshire; Died 1954

EMS membership: 1897

Horatio Carslaw studied at Glasgow and Cambridge. He lectured at the University of Glasgow before moving to a professorship in Sydney, Australia. He worked on a variety of topics in both pure and applied mathematics.

*More details at:*

<http://www-history.mcs.st-and.ac.uk/Biographies/Carslaw.html>



### **James Cassels**

Born 1891 at Ayr

EMS membership: 1927

James Cassels graduated from Edinburgh University and became a teacher at Ayr Academy.

*More details at:*

[http://www-history.mcs.st-and.ac.uk/Biographies/Cassels\\_James.html](http://www-history.mcs.st-and.ac.uk/Biographies/Cassels_James.html)

### **Bernard Childs**

Born 1895 at Edinburgh; Died 1956

EMS membership: 1923

Bernard Childs studied at Birmingham University and then became a lecturer in Physics at Edinburgh University. He was active in adult education.

*More details at:*

<http://www-history.mcs.st-and.ac.uk/Biographies/Childs.html>

### **Charles Chree**

Born 1860 at Lintrathen, Angus; Died 1928

EMS membership: 1885

Charles Chree studied in Aberdeen and Cambridge. He became Superintendent of Kew Observatory and worked on terrestrial magnetism.

*More details at:*

<http://www-history.mcs.st-and.ac.uk/Biographies/Chree.html>

### **George Chrystal**

Born 1851 at Old Meldrum (near Aberdeen); Died 1911

EMS membership: 1883 (Hon)

George Chrystal is best remembered today for *Algebra*: a two volume work which was completed by 1889. He was also involved in educational reform throughout his career and was a major figure in setting up an educational system in Scotland. He became one of the first honorary members of the EMS in 1883.

*More details at:*

<http://www-history.mcs.st-and.ac.uk/Biographies/Chrystal.html>



### **John Clark**

Born 1861 at West Linton, Peebleshire; Died 1947

EMS membership: 1885

John Clark graduated from Edinburgh University and became a teacher at George Heriot's School in Edinburgh. He went on to become Rector of this school. He became Secretary of the EMS in 1891 and President in 1897.

*More details at:*

[http://www-history.mcs.st-and.ac.uk/Biographies/Clark\\_John.html](http://www-history.mcs.st-and.ac.uk/Biographies/Clark_John.html)

### **Peter Comrie**

Born 1868 at Muthill, near Crieff, Perthshire; Died 1944

EMS membership: 1905

Peter Comrie graduated from St Andrews and after a series of teaching posts became Rector of Leith Academy. He was much involved in the EMS, becoming Secretary in 1911 and President in 1916 and 1917.

*More details at:*

<http://www-history.mcs.st-and.ac.uk/Biographies/Comrie.html>



### **Edward Copson**

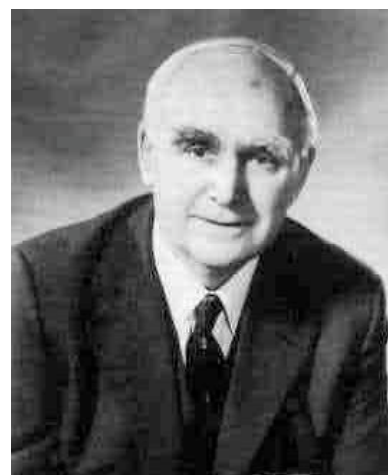
Born 1901 at Coventry; Died 1980

EMS membership: 1922 1979 (Hon)

Edward Copson graduated from Oxford and was appointed a lecturer at Edinburgh. He later held posts at the Royal Naval College in Greenwich and Queen's College Dundee before being appointed Regius Professor at St Andrews. He was an expert on Complex Analysis and contributed many papers on this subject. He became Secretary of the EMS in 1924, President in 1930 and 1954 and an honorary member in 1979.

*More details at:*

<http://www-history.mcs.st-and.ac.uk/Biographies/Copson.html>



### **Charles Coulson**

Born 1910 at Dudley, near Birmingham; Died 1974

EMS membership: 1940

Charles Coulson graduated from Cambridge in a variety of subjects and then lectured at Queen's College Dundee. He held a variety of senior posts at London and Oxford. His main area of interest was molecular physical chemistry, but he contributed to many other areas.

*More details at:*

<http://www-history.mcs.st-and.ac.uk/Biographies/Coulson.html>



### **William B Coutts**

Born 1885 at Kinghorn, Fife; Died 1946

EMS membership: 1913

William Coutts graduated from Edinburgh University and after a period in the Army in World War I he became interested in the mathematical theory of artillery. He became a Professor at the Military College of Science at Shrivenham.

*More details at:*

<http://www-history.mcs.st-and.ac.uk/Biographies/Coutts.html>

### **Tom Cowling**

Born 1906 at Hackney, London; Died 1990

EMS membership: 1938

Tom Cowling graduated from Oxford and worked at Imperial College London. He lectured at Swansea, Dundee and Manchester and became a professor at Bangor and Leeds. He worked on theoretical astronomy and stellar physics.

*More details at:*

<http://www-history.mcs.st-and.ac.uk/Biographies/Cowling.html>



### **Donald Coxeter**

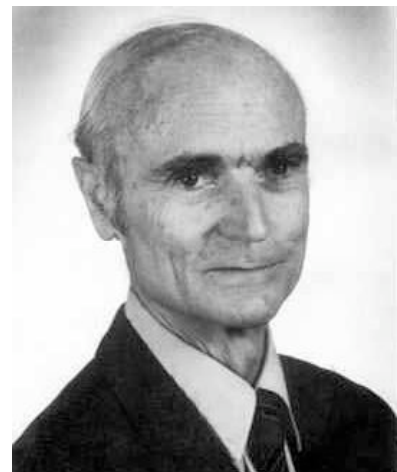
Born 1907 at London; Died 2003

EMS membership: 1959 (Hon)

Donald Coxeter graduated from Cambridge and worked most of his life in Canada. His work was mainly in geometry. In particular he made contributions of major importance in the theory of polytopes, non-euclidean geometry, group theory and combinatorics. He became an honorary member of the EMS in 1959.

*More details at:*

<http://www-history.mcs.st-and.ac.uk/Biographies/Coxeter.html>



### **James Craig**

Born 1868 at Buckhaven, Fife; Died 1952

EMS membership: 1886

James Craig graduated from Edinburgh and Cambridge. He taught at Eton and Winchester and then went to work on the Nile Survey for the Egyptian government. He made some significant inventions in map projections. He was killed when a mob attacked the Turf Club in Cairo.

*More details at:*

[http://www-history.mcs.st-and.ac.uk/Biographies/Craig\\_James.html](http://www-history.mcs.st-and.ac.uk/Biographies/Craig_James.html)

### **Lawrence Crawford**

Born 1867 at Glasgow; Died 1951

EMS membership: 1885

Lawrence Crawford graduated from Glasgow University. After a period at Birmingham University he became Professor of Pure Mathematics at South African College which later became the University of Cape Town.

*More details at:*

<http://www-history.mcs.st-and.ac.uk/Biographies/Crawford.html>

### **Leslie Cunningham**

Born 1895 at Edinburgh; Died 1946

EMS membership: 1925

Leslie Cunningham graduated from Edinburgh University though the First World War interrupted his studies. He worked for the RAF as an education officer but returned to Edinburgh to complete his doctorate. He worked on various problems of air warfare.

*More details at:*

[http://www-history.mcs.st-and.ac.uk/Biographies/Cunningham\\_Leslie.html](http://www-history.mcs.st-and.ac.uk/Biographies/Cunningham_Leslie.html)

### **Charles Galton Darwin**

Born 1887 at Newnham Grange, Cambridge; Died 1962

EMS membership: 1923

Charles G Darwin was the grandson of the famous biologist and graduated from Cambridge. He lectured on Physics at Manchester and after service in World War I and a period back at Cambridge he became Professor of Physics at Edinburgh. He left eventually to become head of a Cambridge college. He worked in Quantum Mechanics and had controversial views on Eugenics.

*More details at:* [http://www-history.mcs.st-and.ac.uk/Biographies/Darwin\\_C\\_G.html](http://www-history.mcs.st-and.ac.uk/Biographies/Darwin_C_G.html)



### **E T Davies**

Born 1904 at Pencader, Carmarthenshire; Died 1973

EMS membership: 1935

E T Davies graduated from the University of Wales at Aberystwyth and then studied in Rome and Paris. After lecturing at King's College London he was appointed to a professorship in Southampton. He worked in Differential Geometry and the Calculus of Variations.

*More details at:*

<http://www-history.mcs.st-and.ac.uk/Biographies/Davies.html>



### **Winifred Deans**

Born 1901 at New Milton, Hampshire; Died 1990

EMS membership: 1928

Winifred Deans graduated from Aberdeen and Cambridge. After a period in teaching she joined a Scottish publishing company and translated many important German scientific texts for them. After World War II she worked at the Commonwealth Bureau of Animal Nutrition in Aberdeen.

*More details at:*

<http://www-history.mcs.st-and.ac.uk/Biographies/Deans.html>

### **Alfred Dixon**

Born 1865 at Northallerton, Yorkshire; Died 1936

EMS membership: 1905

Alfred Dixon graduated from London and Cambridge and then had professorial appointments in Galway and Belfast. He worked on ordinary and partial differential equations.

*More details at:*

<http://www-history.mcs.st-and.ac.uk/Biographies/Dixon.html>



### **John Dougall**

Born 1867 at Kippen, Stirlingshire; Died 1960

EMS membership: 1885

John Dougall graduated from Glasgow. He taught at Glasgow University before joining a publishing firm. He wrote a number of papers on both pure and applied mathematics.

*More details at:*

<http://www-history.mcs.st-and.ac.uk/Biographies/Dougall.html>



### **David Drysdale**

Born 1877 at Dunfermline, Fife; Died 1946

EMS membership: 1899

David Drysdale graduated from Edinburgh University and then taught at George Heriot's School Edinburgh, at the Royal Academy Irvine and at Arbroath High School.

*More details at:*

<http://www-history.mcs.st-and.ac.uk/Biographies/Drysdale.html>

### **Robert Dunbar**

Born 1889 at Broughty Ferry, Angus

EMS membership: 1914

Robert Dunbar graduated from Edinburgh University. After service in World War I he lectured in Physics at Edinburgh. He later moved to University College Cardiff and became Professor of Physics there.

*More details at:*

<http://www-history.mcs.st-and.ac.uk/Biographies/Dunbar.html>

### **George Samuel Eastwood**

Born 1878 at England; Died 1953

EMS membership: 1923

George Eastwood attended the University of London. He taught at Arbroath High School and Beath Secondary School in Cowdenbeath.

*More details at:*

<http://www-history.mcs.st-and.ac.uk/Biographies/Eastwood.html>



### **William Edge**

Born 1904 at Stockport; Died 1997

EMS membership: 1932 1983 (Hon)

William Edge graduated from Cambridge and lectured at Edinburgh University. He wrote many papers in Geometry. He became President of the EMS in 1944 and an honorary member in 1983.

*More details at:*

<http://www-history.mcs.st-and.ac.uk/Biographies/Edge.html>



### **Arthur Erdélyi**

Born 1908 at Budapest, Hungary; Died 1977

EMS membership: 1940

Arthur Erdélyi studied in Brno and Prague and came to Scotland before the Second World War to avoid the Nazi invasion of Czechoslovakia. He became a lecturer at Edinburgh and after a period in the USA he returned to Edinburgh as a Professor. He was an expert on Special Functions. He became President of the EMS in 1971.

*More details at:*

<http://www-history.mcs.st-and.ac.uk/Biographies/Erdelyi.html>



### **Robert Ferguson**

Born 1828 at Airdrie, Lanarkshire; Died 1912

EMS membership: 1883

Robert Ferguson studied at Edinburgh and Heidelberg. He was a founder member of the EMS and became the fifth President in 1885. He was partner and headmaster of the Edinburgh Institution in George Street where many of the early meetings of the EMS were held.

*More details at:*

<http://www-history.mcs.st-and.ac.uk/Biographies/Ferguson.html>

### **Bill Ferrar**

Born 1893 at Bristol; Died 1990

EMS membership: 1924

Bill Ferrar graduated from Oxford after an undergraduate career interrupted by World War I. He lectured at Bangor and Edinburgh before moving back to Oxford. He worked in college administration and eventually became Principal of Hertford College. He worked on the convergence of series.

*More details at:*

<http://www-history.mcs.st-and.ac.uk/Biographies/Ferrar.html>



### **Lester R Ford**

Born 1886 at Missouri, USA; Died 1967

EMS membership: 1914

Lester Ford was an American mathematician who lectured for several years in Edinburgh before moving back to the USA. He wrote some important textbooks and is best known for his contributions to the Mathematical Association of America and the *American Mathematical Monthly*.

*More details at:*

<http://www-history.mcs.st-and.ac.uk/Biographies/Ford.html>

### **Alexander Yule Fraser**

Born 1857 at Cargill, near Perth; Died 1890

EMS membership: 1883

Alexander Yule Fraser graduated from the university of Aberdeen and taught at George Watson's College Edinburgh. He became headmaster of Allen Glen's Institute in Glasgow though his time there was dogged by ill-health. With Barclay and Knott he was one of the writers who originally proposed the founding of the EMS. He became Secretary and Treasurer in 1883 and President in 1889.

*More details at:*

<http://www-history.mcs.st-and.ac.uk/Biographies/Fraser.html>

### **David Kennedy Fraser**

Born 1888 at Edinburgh; Died 1962

EMS membership: 1908

David Kennedy Fraser studied at Glasgow, Leipzig and Cornell Universities. He returned to Edinburgh as a Lecturer in Education before moving to Jordanhill Training College.

*More details at:*

<http://www-history.mcs.st-and.ac.uk/Biographies/Kennedy-Fraser.html>

### **Maurice Fréchet**

Born 1878 at Maligny, Yonne, Bourgogne, France; Died 1973

EMS membership: 1938 (Hon)

Maurice Fréchet was a French mathematician who made major contributions to the topology of point sets and defined and founded the theory of abstract spaces. He became an honorary member of the EMS in 1938.

*More details at:*

<http://www-history.mcs.st-and.ac.uk/Biographies/Frechet.html>



### **Finlay Freundlich**

Born 1885 at Biebrich, Germany; Died 1964

EMS membership: 1940

Finlay Freundlich was a distinguished German astronomer who worked with Einstein on measurements of the orbit of Mercury to confirm the general theory of relativity. He left Germany to avoid Nazi rule and became the Napier Professor of Astronomy at St Andrews.

*More details at:*

<http://www-history.mcs.st-and.ac.uk/Biographies/Freundlich.html>



### **G Leslie Frewin**

Born 1902 at Glasgow

EMS membership: 1923

Leslie Frewin graduated from the University of Edinburgh and taught at George Watson's College before moving to Inverness.

*More details at:*

<http://www-history.mcs.st-and.ac.uk/Biographies/Frewin.html>

### **William Gentle**

Born 1877 at Dundee, Angus; Died 1964

EMS membership: 1903

William Gentle graduated from the University of Edinburgh and taught at George Heriot's School Edinburgh. After being wounded in World War I he returned to George Heriot's and eventually became headmaster there.

*More details at:*

<http://www-history.mcs.st-and.ac.uk/Biographies/Gentle.html>

### **David Gibb**

Born 1883 at Methil, Fife; Died 1946

EMS membership: 1910

David Gibb graduated from Edinburgh University and went on to become a lecturer and reader there. He became President of the EMS in 1920.

*More details at:*

<http://www-history.mcs.st-and.ac.uk/Biographies/Gibb.html>



### **George Gibson**

Born 1858 at Greenlaw, Berwickshire; Died 1930

EMS membership: 1884 1902 (Hon)

George Gibson graduated from Glasgow University and went on to become Professor there. He published several important textbooks and was an enthusiast for the History of Mathematics. He became President of the EMS in 1888 and an honorary member in 1902.

*More details at:*

<http://www-history.mcs.st-and.ac.uk/Biographies/Gibson.html>



### **Robert Gillespie**

Born 1903 at Johnstone, Renfrewshire; Died 1977

EMS membership: 1925

Robert Gillespie studied at Glasgow and Cambridge and then lectured at Glasgow University. His main interests were in analysis. He became President of the EMS in 1946 and 1967.

*More details at:*

<http://www-history.mcs.st-and.ac.uk/Biographies/Gillespie.html>

### **Archibald Goldie**

Born 1888 at Glenisla, Angus; Died 1964

EMS membership: 1926

Archibald Goldie studied at the universities of St Andrews and Cambridge. He served in the Meteorological Service of the British Army in World War I and continued to work in various branches of the Meteorological Office.

*More details at:*

<http://www-history.mcs.st-and.ac.uk/Biographies/Goldie.html>

### **Andrew Gray**

Born 1847 at Lochgelly, Fife; Died 1925

EMS membership: 1922

Andrew Gray graduated from Glasgow University and was appointed assistant and secretary to Lord Kelvin. He became Professor of Physics at University College Bangor and then returned to Glasgow as Kelvin's successor. He produced many books and papers in both mathematics and physics.

*More details at:*

[http://www-history.mcs.st-and.ac.uk/Biographies/Gray\\_Andrew.html](http://www-history.mcs.st-and.ac.uk/Biographies/Gray_Andrew.html)



### **James Gray**

Born 1875 at Glasgow; Died 1934

EMS membership: 1909

James Gray was the son of Andrew Gray. He graduated from University College Bangor and occupied a series of posts in Glasgow University, finishing as Professor of Applied Physics.

*More details at:*

[http://www-history.mcs.st-and.ac.uk/Biographies/Gray\\_James.html](http://www-history.mcs.st-and.ac.uk/Biographies/Gray_James.html)

### **Marion Gray**

Born 1902 at Ayr; Died 1979

EMS membership: 1922

Marion Gray graduated from Edinburgh University and then went to Bryn Mawr College in the USA. She completed her doctorate there and returned to posts at Edinburgh and Imperial College London. She returned to the USA and worked for AT&T for the rest of her career. The Gray graph is named after her.

*More details at:*

[http://www-history.mcs.st-and.ac.uk/Biographies/Gray\\_Marion.html](http://www-history.mcs.st-and.ac.uk/Biographies/Gray_Marion.html)





### **William Greaves**

Born 1897 at Barbados, West Indies; Died 1955

EMS membership: 1940

William Greaves graduated from Cambridge and then worked at the Royal Observatory Greenwich. He became Professor of Astronomy in Edinburgh. He worked on both theoretical and practical astronomy.

*More details at:*

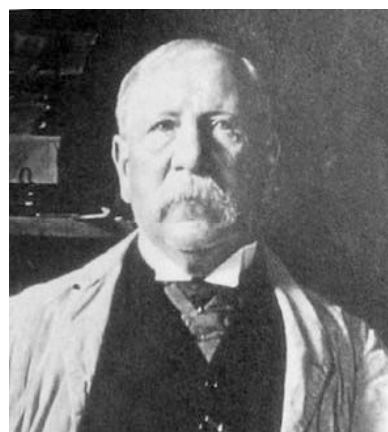
<http://www-history.mcs.st-and.ac.uk/Biographies/Greaves.html>

### **George Greenhill**

Born 1847 at London; Died 1927

EMS membership: 1908 (Hon)

George Greenhill graduated from Cambridge and became Professor of Mathematics at the Royal Military Academy at Woolwich. His main work was on Elliptic Functions but he published widely on applications of mathematics to practical problems. He became an honorary member of the EMS in 1908.



*More details at:*

<http://www-history.mcs.st-and.ac.uk/Biographies/Greenhill.html>

### **William J Greenstreet**

Born 1861 at Milton, Kent; Died 1930

EMS membership: 1895

William J Greenstreet graduated from Cambridge and became headmaster of Marling School Stroud. He is best-known as the long-running editor of the *Mathematical Gazette*.

*More details at:*

<http://www-history.mcs.st-and.ac.uk/Biographies/Greenstreet.html>

### **Alexander Barrie Grieve**

Born 1886 at Aberfeldy; Died 1952

EMS membership: 1923

Barrie Grieve graduated from Edinburgh. He continued to research in Geometry and gained a DSc for this work. He became an HM Inspector of Schools.

*More details at:*

<http://www-history.mcs.st-and.ac.uk/Biographies/Grieve.html>

### **William Guthrie**

Born 1905 at Cowdenbeath, Fife; Died 1978

EMS membership: 1926

William Guthrie graduated from Cambridge and gained an appointment at the University of St Andrews. He moved to become a professor at Magee College in Londonderry and eventually became Principal of the College.

*More details at:*

<http://www-history.mcs.st-and.ac.uk/Biographies/Guthrie.html>

### **Richard Gwilt**

Born 1901 at Edinburgh; Died 1972

EMS membership: 1925

Richard Gwilt was an actuary who worked for various Edinburgh insurance companies. He was a Fellow of the Faculty of Actuaries and of the Institute of Actuaries.

*More details at:*

<http://www-history.mcs.st-and.ac.uk/Biographies/Gwilt.html>

### **Robert Hardie**

Born 1864 at Edinburgh; Died 1942

EMS membership: 1883

Robert Hardie graduated from Oxford and occupied various posts in the Philosophy department of Edinburgh University. He was a founder member of the EMS.

*More details at:*

[http://www-history.mcs.st-and.ac.uk/Biographies/Hardie\\_Robert.html](http://www-history.mcs.st-and.ac.uk/Biographies/Hardie_Robert.html)

### **William Hodge**

Born 1903 at Edinburgh; Died 1975

EMS membership: 1954 (Hon)

William Hodge studied at Edinburgh and Cambridge Universities. After some time at Bristol and in the USA he returned to Cambridge and became Lowndean Professor of Astronomy and Geometry. His main interests were in Algebraic Geometry and Differential Geometry. He became an honorary member of the EMS in 1954. He was knighted in 1959.

*More details at:*

<http://www-history.mcs.st-and.ac.uk/Biographies/Hodge.html>



### **Ellice Horsburgh**

Born 1870 at Kelso, Roxburghshire; Died 1935

EMS membership: 1906 1935 (Hon)

Ellice Horsburgh graduated from Edinburgh and became a lecturer in Technical Mathematics at the University. He became Treasurer of the EMS in 1915 and an honorary fellow in 1935.

*More details at:*

<http://www-history.mcs.st-and.ac.uk/Biographies/Horsburgh.html>

### **Patrick Hardie**

Born 1873 at Edinburgh; Died 1943

EMS membership: 1900

Patrick Hardie graduated from Edinburgh University. He spent most of his career teaching in Egypt at Alexandria and Cairo.

*More details at:*

[http://www-history.mcs.st-and.ac.uk/Biographies/Hardie\\_Patrick.html](http://www-history.mcs.st-and.ac.uk/Biographies/Hardie_Patrick.html)

### **Pierre Humbert**

Born 1891 at Paris, France; Died 1953

EMS membership: 1914

Pierre Humbert graduated from the École Polytechnique in Paris and then moved to Edinburgh to do research under Whittaker. He spent most of his career in the University of Montpellier. He worked on Special Functions.

*More details at:*

[http://www-history.mcs.st-and.ac.uk/Biographies/Humbert\\_Pierre.html](http://www-history.mcs.st-and.ac.uk/Biographies/Humbert_Pierre.html)

### **Edward Ince**

Born 1891 at Amblecote, Staffordshire; Died 1941

EMS membership: 1914

Edward Ince graduated from Edinburgh and researched at Edinburgh and Cambridge. He worked at universities in Leeds, Liverpool, Cairo, Edinburgh and Imperial College London before moving back to Edinburgh as Head of Technical Mathematics. He worked on Special Functions.

*More details at:*

<http://www-history.mcs.st-and.ac.uk/Biographies/Ince.html>

### **David Jack**

Born 1896 at Scarfskerry, Caithness; Died 1975

EMS membership: 1920

David Jack studied at Edinburgh though his studies were interrupted by war service. He took up a post teaching Physics at St Andrews.

*More details at:*

<http://www-history.mcs.st-and.ac.uk/Biographies/Jack.html>

### **William Jack**

Born 1834 at Stewarton, Ayrshire; Died 1924

EMS membership: 1902 (Hon)

William Jack graduated from Glasgow and Cambridge. He became an HM Inspector of Schools for SW Scotland and was then appointed Professor of Mathematics at Owen's College Manchester. He left there for the editorship of the *Glasgow Herald*. After this he became Professor of Mathematics at Glasgow University and held this post for 30 years. He became an honorary member of the EMS in 1902.



*More details at:*

[http://www-history.mcs.st-and.ac.uk/Biographies/Jack\\_William.html](http://www-history.mcs.st-and.ac.uk/Biographies/Jack_William.html)

### **John Jackson**

Born 1887 at Paisley, Renfrewshire; Died 1958

EMS membership: 1908

John Jackson graduated from Glasgow and Cambridge. He went to the Royal Observatory at Greenwich but his career there was interrupted by World War I. He was then appointed HM Astronomer at the University of Cape Town.

*More details at:*

<http://www-history.mcs.st-and.ac.uk/Biographies/Jackson.html>

### **David Johnstone**

Born 1877 at Edinburgh

EMS membership: 1900

David Johnstone graduated from Edinburgh University and taught at Spier's School Beith and George Heriot's School Edinburgh before moving to the Provincial Training College in Edinburgh.

*More details at:*

<http://www-history.mcs.st-and.ac.uk/Biographies/Johnstone.html>

### **Lord Kelvin (William Thomson)**

Born 1824 at Belfast, Ireland; Died 1907

EMS membership: 1883 (Hon)

William Thomson graduated from Glasgow and Cambridge showing precocious ability in Mathematics and Physics. He became Professor of Natural Philosophy at Glasgow at a very young age. He made important contributions to many areas of Physics including electricity, magnetism and thermodynamics. He was created Lord Kelvin for his work on the first transatlantic cable. He became one of the first honorary members of the EMS in 1883.

*More details at:*

<http://www-history.mcs.st-and.ac.uk/Biographies/Thomson.html>



### **Cargill Knott**

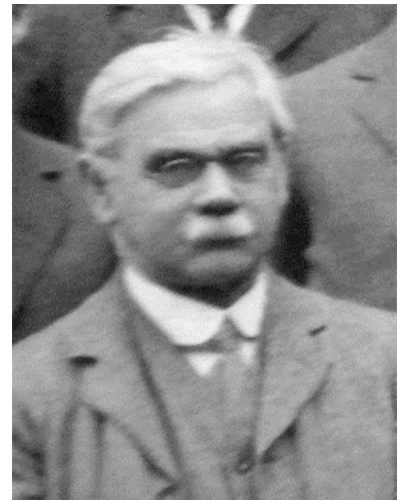
Born 1856 at Penicuik, Midlothian; Died 1922

EMS membership: 1883

Cargill Knott graduated from Edinburgh University and was then an assistant in the Physics department. With Barclay and Fraser he was one of the writers who originally proposed the founding of the EMS. He went to the Imperial University in Tokyo as Professor. He returned to a lectureship in Edinburgh and eventually became a Reader in Applied Mathematics. He became Secretary and Treasurer of the EMS in 1883 and President in 1893 and 1918.

*More details at:*

<http://www-history.mcs.st-and.ac.uk/Biographies/Knott.html>



### **Scott Lang**

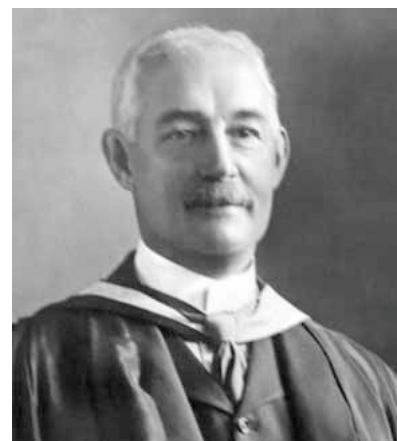
Born 1850 at Edinburgh; Died 1926

EMS membership: 1887

Peter Scott Lang graduated from Edinburgh University and after a period as assistant in Edinburgh he became Regius Professor of Mathematics at St Andrews. He held this position for 42 years.

*More details at:*

[http://www-history.mcs.st-and.ac.uk/Biographies/Scott\\_Lang.html](http://www-history.mcs.st-and.ac.uk/Biographies/Scott_Lang.html)



### **George Lawson**

Born 1870 at Culross, Fife; Died 1941

EMS membership: 1887

George Lawson graduated from St Andrews and became assistant to the professor. He left to teach at George Watson's School in Edinburgh and eventually became Rector of Waid Academy Anstruther. He became President of the EMS in 1937.

*More details at:*

<http://www-history.mcs.st-and.ac.uk/Biographies/Lawson.html>

### **Walter Ledermann**

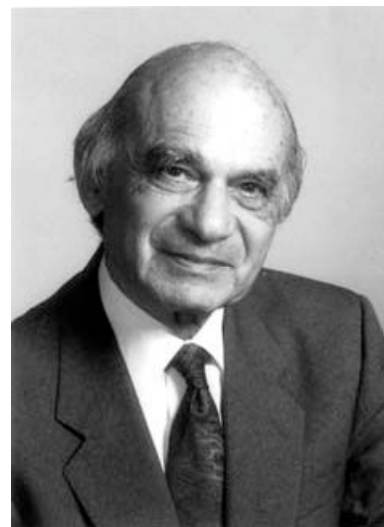
Born 1911 at Berlin, Germany

EMS membership: 1935

Walter Ledermann graduated from Berlin but was forced to leave Germany in 1933 to avoid Nazi persecution. He came to St Andrews and studied under Turnbull. He worked at Dundee and St Andrews until after World War II when he moved to Manchester and then to the University of Sussex. He is especially known for his work in homology, group theory and number theory.

*More details at:*

<http://www-history.mcs.st-and.ac.uk/Biographies/Ledermann.html>



### **Tullio Levi-Civita**

Born 1873 at Padua, Veneto, Italy; Died 1941

EMS membership: 1930 (Hon)

Tullio Levi-Civita was an Italian mathematician who is best known for his work on the absolute differential calculus. He published the theory of tensors in a form which was used by Einstein in his theory of relativity. He had problems later in his life with the rise of Fascism in Italy. He became an honorary member of the EMS in 1930.

*More details at:*

<http://www-history.mcs.st-and.ac.uk/Biographies/Levi-Civita.html>



### **Hyman Levy**

Born 1889 at Edinburgh; Died 1975

EMS membership: 1911

Hyman Levy graduated from Edinburgh and went on to study in Göttingen. He was forced to leave Germany on the outbreak of World War II and returned to work at Oxford and at the National Physical Laboratory. He held various posts in Imperial College London, finishing as Head of the Mathematics department. His main work was in the numerical solution of differential equations.

*More details at:*

[http://www-history.mcs.st-and.ac.uk/Biographies/Levy\\_Hyman.html](http://www-history.mcs.st-and.ac.uk/Biographies/Levy_Hyman.html)

### **George Lidstone**

Born 1870 at London; Died 1952

EMS membership: 1918

George Lidstone was an actuary who worked for various Edinburgh insurance companies. He wrote papers on various numerical and statistical topics.

*More details at:*

<http://www-history.mcs.st-and.ac.uk/Biographies/Lidstone.html>

### **Balfour Lockhart**

Born 1886 at Cambuslang, Lanarkshire; Died 1969

EMS membership: 1920

Balfour Lockhart graduated from Edinburgh University, his studies being interrupted by war service. He taught for most of his career at Edinburgh Academy, finishing as Head of Mathematics. He became Treasurer of the EMS in 1927.

*More details at:*

<http://www-history.mcs.st-and.ac.uk/Biographies/Lockhart.html>

### **Thomas Lumsden**

Born 1895 at Edinburgh; Died 1944

EMS membership: 1919

Thomas Lumsden graduated from Edinburgh University. He became a lecturer in Mathematics at Birmingham University. He was killed in action in World War II.

*More details at:*

<http://www-history.mcs.st-and.ac.uk/Biographies/Lumsden.html>

### **James Macdonald**

Born 1868 at Portsoy; Died 1937

EMS membership: 1896

James Macdonald graduated from Edinburgh University. he was appointed the first Rector of Leith Academy and went on to become an HM Inspector of Schools.

*More details at:*

[http://www-history.mcs.st-and.ac.uk/Biographies/Macdonald\\_James.html](http://www-history.mcs.st-and.ac.uk/Biographies/Macdonald_James.html)

### **Hector Macdonald**

Born 1865 at Edinburgh; Died 1935

EMS membership: 1887

Hector Macdonald graduated from Aberdeen and Cambridge Universities. He stayed on at Cambridge and won the Adams prize. He returned to Aberdeen as Professor. He did important work on electromagnetic waves.

*More details at:*

<http://www-history.mcs.st-and.ac.uk/Biographies/Macdonald.html>



### **William James Macdonald**

Born 1851 at Huntly, Aberdeenshire; Died 1941

EMS membership: 1883

William James Macdonald graduated from the University of St Andrews. He taught at Madras College St Andrews, at Merchiston Castle School and at Donald Stewart's College in Edinburgh. He was a pioneer of the introduction of modern geometry to the mathematical curriculum. He was a founder member of the EMS and became the sixth President in 1887.

*More details at:*

[http://www-history.mcs.st-and.ac.uk/Biographies/Macdonald\\_William.html](http://www-history.mcs.st-and.ac.uk/Biographies/Macdonald_William.html)

### **John S Mackay**

Born 1843 at Auchencairn near Kirkcudbright, Kirkcudbrightshire; Died 1914

EMS membership: 1883 1894 (Hon)

John S Mackay graduated from St Andrews University and taught at Perth Academy and Edinburgh Academy. He was a founder member of the EMS and became the first President in 1883 and an honorary member in 1894. He published numerous papers on Geometry in the EMS *Proceedings*.

*More details at:*

[http://www-history.mcs.st-and.ac.uk/Biographies/Mackay\\_J\\_S.html](http://www-history.mcs.st-and.ac.uk/Biographies/Mackay_J_S.html)



### **Gladys Mackenzie**

Born 1903 at Edinburgh

EMS membership: 1925

Gladys Mackenzie graduated from the University of Edinburgh and became an assistant in the Natural Philosophy department. She moved to Newnham College Cambridge and later to Bristol University and Queen Elizabeth College London. She published papers on X-ray spectroscopy.

*More details at:*

<http://www-history.mcs.st-and.ac.uk/Biographies/Mackenzie.html>

### **John Mackie**

Born 1888 at Leith, near Edinburgh; Died 1955

EMS membership: 1921

John Mackie graduated from Edinburgh University and went on to teach at Leith Academy eventually becoming Rector. He became President of the EMS in 1945.

*More details at:*

<http://www-history.mcs.st-and.ac.uk/Biographies/Mackie.html>

### **Chrystal Macmillan**

Born 1872 at Edinburgh; Died 1937

EMS Membership: 1897

Chrystal Macmillan was the first female science graduate at Edinburgh University and the first female honours graduate in Mathematics. She went on to study at Berlin. She was the first woman to plead a case before the House of Lords. She became active in the Women's Suffrage Movement and went on to become a lawyer.

*More details at:*

[http://www-history.mcs.st-and.ac.uk/Biographies/Macmillan\\_Chrystal.html](http://www-history.mcs.st-and.ac.uk/Biographies/Macmillan_Chrystal.html)



### **Donald Macmillan**

Born 1857 at Kintail

EMS membership: 1887

Donald Macmillan graduated from Aberdeen University and became Principal of Clifton Bank School in St Andrews.

*More details at:*

<http://www-history.mcs.st-and.ac.uk/Biographies/Macmillan.html>

### **Thomas MacRobert**

Born 1884 at Dreghorn, Ayrshire; Died 1962

EMS membership: 1911

Thomas MacRobert studied at Glasgow and Cambridge universities. He returned to Glasgow to a series of posts culminating in the professorship. He worked on Complex Analysis. He became President of the EMS in 1921 and was a founder member of the Glasgow Mathematical Association.

*More details at:*

<http://www-history.mcs.st-and.ac.uk/Biographies/MacRobert.html>



### **Mohammed Reda Madwar**

Born 1893 at Alexandria, Egypt; Died 1973

EMS membership: 1925

Mohammed Reda Madwar graduated from Edinburgh University and after a period in Egypt returned to Edinburgh to gain his doctorate in Astronomy. He went back to Egypt and became Professor of Astronomy at Cairo University.

*More details at:*

<http://www-history.mcs.st-and.ac.uk/Biographies/Madwar.html>

### **Artemas Martin**

Born 1835 at Stuben County, New York, USA; Died 1918

EMS membership: 1885

Artemas Martin was a self-taught mathematician and book-collector whose output covered a wide range of mathematical problems.

*More details at:*

<http://www-history.mcs.st-and.ac.uk/Biographies/Martin.html>



### **Neil McArthur**

Born 1883 at West Loch Tarbert, Argyll; Died 1951

EMS membership: 1906

Neil McArthur graduated from Glasgow University and apart from a period of war service spent his whole career at the University. He became President of the EMS in 1919.

*More details at:*

<http://www-history.mcs.st-and.ac.uk/Biographies/McArthur.html>

**James McBride**

Born 1868 at Broughshane, Co. Antrim, Ireland; Died 1949

EMS membership: 1905

James McBride studied at Queen's College Belfast and then taught at various Glasgow schools finishing as Rector of Queen's Park School. He published a number of papers in Geometry and was a founder member of the Euclidean Club.

*More details at:*

<http://www-history.mcs.st-and.ac.uk/Biographies/McBride.html>

**Donald McIntosh**

Born 1868 at Kirkmichael, Banffshire; Died 1957

EMS membership: 1895

Donald McIntosh graduated from the University of Aberdeen and taught at George Watson's Ladies College in Edinburgh. He was appointed a Director of Education. He became Secretary of the EMS in 1899 and President in 1905.

*More details at:*

<http://www-history.mcs.st-and.ac.uk/Biographies/McIntosh.html>

**Anderson McKendrick**

Born 1876 at Edinburgh; Died 1943

EMS membership: 1926

Anderson McKendrick trained as a medical doctor in Glasgow and came to Edinburgh as Superintendent of the College of Physicians Laboratory. He made some significant mathematical contributions to biology.

*More details at:*

<http://www-history.mcs.st-and.ac.uk/Biographies/McKendrick.html>

**Dougald McQuistan**

Born 1879 at Inverkip, Renfrew; Died 1946

EMS membership: 1908

Dougald McQuistan studied at Glasgow and Cambridge. He became Professor of Natural Philosophy at the Royal Technical College in Glasgow.

*More details at:*

<http://www-history.mcs.st-and.ac.uk/Biographies/McQuistan.html>

### **George McVittie**

Born 1904 at Smyrna, Turkey (now Izmir); Died 1988

EMS membership: 1927

George McVittie studied at Edinburgh and Cambridge. He then held posts at Leeds, Edinburgh and London and became Professor of Astronomy at the University of Illinois. His main work was in Relativity and Cosmology.

*More details at:*

<http://www-history.mcs.st-and.ac.uk/Biographies/McVittie.html>

### **John McWhan**

Born 1885 at Cambuslang, Glasgow; Died 1943

EMS membership: 1908

John McWhan studied at Glasgow and Göttingen. He returned to a post at Glasgow University.

*More details at:* <http://www-history.mcs.st-and.ac.uk/Biographies/McWhan.html>

### **John Meiklejohn**

Born 1872 at Weydale, Thurso, Caithness; Died 1951

EMS membership: 1926

John Meiklejohn graduated from Edinburgh and taught at Dundee High School.

*More details at:* <http://www-history.mcs.st-and.ac.uk/Biographies/Meiklejohn.html>



### **Alexander Merriles**

Born 1880 at North Berwick; Died 1950

EMS membership: 1905

Alexander Merriles graduated from Edinburgh University and afterwards taught at Edinburgh Provincial Training College and George Watson's Ladies' College in Edinburgh.

*More details at:*

<http://www-history.mcs.st-and.ac.uk/Biographies/Merriles.html>

### **William Metzler**

Born 1863 at Odessa, Ontario, Canada; Died 1943

EMS membership: 1918

William Metzler was a Canadian mathematician who graduated from Toronto University and taught at Syracuse University and Albany Teachers Training College, both in New York State. He published papers on the theory of matrices and determinants, several of them in the *Proceedings* of the EMS.

*More details at:*

<http://www-history.mcs.st-and.ac.uk/Biographies/Metzler.html>

### **John Miller**

Born 1871 at Glasgow; Died 1956

EMS membership: 1899

John Miller studied at Glasgow and Göttingen. He returned to Glasgow to the Royal College of Science and Technology (the precursor to Strathclyde University). He became President of the EMS in 1913.

*More details at:*

[http://www-history.mcs.st-and.ac.uk/Biographies/Miller\\_John.html](http://www-history.mcs.st-and.ac.uk/Biographies/Miller_John.html)



### **Archibald Milne**

Born 1875 at Edinburgh; Died 1958

EMS membership: 1898

Archibald Milne graduated from Edinburgh University and taught at the Church of Scotland Training College in Edinburgh. He was an Editor of the EMS *Proceedings* and became President of the EMS in 1923.

*More details at:*

[http://www-history.mcs.st-and.ac.uk/Biographies/Milne\\_Archibald.html](http://www-history.mcs.st-and.ac.uk/Biographies/Milne_Archibald.html)

### **William P Milne**

Born 1881 at Longside, Aberdeenshire; Died 1967

EMS membership: 1910

William P Milne studied at Aberdeen and Cambridge universities. He taught at Clifton College and then became Professor of Mathematics at Leeds. He published papers in Geometry including many in the *Proceedings* of the EMS.

*More details at:*

[http://www-history.mcs.st-and.ac.uk/Biographies/Milne\\_William.html](http://www-history.mcs.st-and.ac.uk/Biographies/Milne_William.html)

### **James Mitchell**

Born 1871 at Edinburgh; Died 1959

EMS membership: 1894

James Mitchell studied at Edinburgh and Berlin. He taught at Waid Academy, at Nairn Academy and Lochgilphead School Argyll where he became headmaster.

*More details at:*

[http://www-history.mcs.st-and.ac.uk/Biographies/Mitchell\\_James.html](http://www-history.mcs.st-and.ac.uk/Biographies/Mitchell_James.html)

### **George Moffat**

Born 1872 at Leith (near Edinburgh); Died 1934

EMS membership: 1897

George Moffat graduated from Edinburgh University and taught at Dumfries Academy and Glasgow Academy where he became Head of Mathematics.

*More details at:*

<http://www-history.mcs.st-and.ac.uk/Biographies/Moffat.html>

### **Alexander Morgan**

Born 1860 at Leith, Edinburgh; Died 1946

EMS membership: 1897

Alexander Morgan graduated from Edinburgh University and lectured in Mathematics at the Church of Scotland Training College in Edinburgh. He was appointed Principal of the College. He had an important influence on the development of education in Scotland. He became President of the EMS in 1898.

*More details at:* [http://www-history.mcs.st-](http://www-history.mcs.st-and.ac.uk/Biographies/Morgan_Alexander.html)

[and.ac.uk/Biographies/Morgan\\_Alexander.html](http://www-history.mcs.st-and.ac.uk/Biographies/Morgan_Alexander.html)

### **John Morrison**

Born 1863 at Muthill, Perthshire; Died 1944

EMS membership: 1883

John Morrison graduated from Edinburgh University and took up a Physics post at Heriot-Watt College. He was a founder member of the EMS. He was appointed Professor of Physics at Victoria College Stellenbosch in South Africa. He did important work on the magnetic survey of South Africa.

*More details at:*

<http://www-history.mcs.st-and.ac.uk/Biographies/Morrison.html>

### **Thomas Muir**

Born 1844 at Stonebyres, Falls of Clyde, Lanarkshire;  
Died 1934

EMS membership: 1883

Thomas Muir graduated from the University of Glasgow and after working at St Andrews and Glasgow universities he taught at Glasgow High School. He then went to the Cape Colony in South Africa as Superintendent General of Education. He is best known for his 5 volume History of Determinants. He was a founder member of the EMS and became the second President in 1883.

*More details at:*

<http://www-history.mcs.st-and.ac.uk/Biographies/Muir.html>



### **Robert Muirhead**

Born 1860 at Shawlands, Glasgow; Died 1941

EMS membership: 1884 1912 (Hon)

Robert Muirhead studied at Glasgow, Cambridge and Göttingen. He taught in various schools and founded the Glasgow Tutorial College. He became President of the EMS in 1899 and 1909 and an honorary member in 1912 and published many papers in the *Proceedings*.

*More details at:*

<http://www-history.mcs.st-and.ac.uk/Biographies/Muirhead.html>

### **Jason J Nassau**

Born 1893 at Smyrna, (now Izmir) Turkey; Died 1965

EMS membership: 1919

Jason J Nassau studied at Columbia and Syracuse Universities in New York State. After service in World War I he spent some time in Edinburgh. He became Professor of Astronomy at Case Institute of Technology in Cleveland Ohio. He published papers in both mathematics and astronomy.

*More details at:*

<http://www-history.mcs.st-and.ac.uk/Biographies/Nassau.html>

### **Charles Niven**

Born 1845 at Peterhead; Died 1923

EMS membership: 1883 (Hon)

Charles Niven studied at Aberdeen and Cambridge universities and became Professor of Mathematics at Cork. He returned to Aberdeen as Professor of Natural Philosophy and held this post for 42 years. He became one of the first honorary members of the EMS in 1883.

*More details at:*

[http://www-history.mcs.st-and.ac.uk/Biographies/Niven\\_Charles.html](http://www-history.mcs.st-and.ac.uk/Biographies/Niven_Charles.html)

### **Annie Hutton Numbers**

Born 1897 at Edinburgh; Died 1988

EMS membership: 1917

Annie Hutton Numbers graduated from Edinburgh University and worked in the Chemistry department in Edinburgh. She taught in schools in Ipswich and High Wycombe.

*More details at:*

<http://www-history.mcs.st-and.ac.uk/Biographies/Numbers.html>

### **Eleanor Pairman**

Born 1896 at Broomieknowe, Lasswade, near Edinburgh

EMS membership: 1917

Eleanor Pairman graduated from Edinburgh. She went to London where she worked with Karl Pearson and then went to the USA where she gained a doctorate from Radcliffe College.

*More details at:*

<http://www-history.mcs.st-and.ac.uk/Biographies/Pairman.html>

### **James Paton**

Born 1903 at Cowdenbeath, Fife; Died 1973

EMS membership: 1929

James Paton graduated from Edinburgh and spent most of his career at the University finishing as head of the Department of Meteorology.

*More details at:*

<http://www-history.mcs.st-and.ac.uk/Biographies/Paton.html>

### **William Peddie**

Born 1861 at Papa Westray, Orkney; Died 1946

EMS membership: 1883

William Peddie graduated from Edinburgh University and then lectured in Physics. He was appointed Professor of Physics at Queen's College Dundee and held this post for 37 years. He was a founder member of the EMS and became President in 1895 and 1932.

*More details at:*

<http://www-history.mcs.st-and.ac.uk/Biographies/Peddie.html>



### **Robert Philip**

Born 1854 at St Andrews, Fife; Died 1913

EMS membership: 1885

Robert Philip graduated from St Andrews and became a teacher at Madras College St Andrews. He moved to Hutcheon's School Glasgow and eventually became headmaster there.

*More details at:*

<http://www-history.mcs.st-and.ac.uk/Biographies/Philip.html>



### **H T H Piaggio**

Born 1884 at London; Died 1967

EMS membership: 1912

H T H Piaggio graduated from Cambridge and then worked at the University of Nottingham. He is best known for his text-book on Differential Equations.

*More details at:*

<http://www-history.mcs.st-and.ac.uk/Biographies/Piaggio.html>

### **David Picken**

Born 1879 at Dennistoun, Glasgow; Died 1956

EMS membership: 1903

David Picken studied at Glasgow and Cambridge universities. After a period as a lecturer at Glasgow he became Professor of Mathematics at Victoria College, Wellington New Zealand. He later moved to the University of Melbourne in Australia.

*More details at:*

<http://www-history.mcs.st-and.ac.uk/Biographies/Picken.html>

### **Peter Pinkerton**

Born 1870 at Kilmarnock; Died 1930

EMS membership: 1893

Peter Pinkerton studied at Glasgow and Dublin. After teaching at various schools he became Rector of Glasgow High School. He became President of the EMS in 1908.

*More details at:*

<http://www-history.mcs.st-and.ac.uk/Biographies/Pinkerton.html>

### **John Pullar**

Born 1860 at Caputh, Perthshire; Died 1940

EMS membership: 1898

John Pullar graduated from St Andrews and taught at Madras College St Andrews, at Hamilton Academy and at Montrose Academy.

*More details at:*

<http://www-history.mcs.st-and.ac.uk/Biographies/Pullar.html>

### **Peter Ramsay**

Born 1879 at Glasgow; Died 1926

EMS membership: 1905

Peter Ramsay graduated from Glasgow University and taught at George Watson's School in Edinburgh. He became Secretary of the EMS in 1916 and President in 1922.

*More details at:*

<http://www-history.mcs.st-and.ac.uk/Biographies/Ramsay.html>

### **Robert Rankin**

Born 1915 at Garlieston, Wigtownshire; Died 2001

EMS membership: 1954 1990 (Hon)

Robert Rankin studied at Cambridge University. His fellowship there was interrupted by his wartime work on rockets. He became Professor of Mathematics at Birmingham before moving to the professorship at Glasgow, a post he held for 27 years. His most important work was on Number Theory. He became President of the EMS in 1957 and 1978 and an honorary member in 1990.

*More details at:*

<http://www-history.mcs.st-and.ac.uk/Biographies/Rankin.html>



### **Archibald Richardson**

Born 1881 at London; Died 1954

EMS membership: 1940

Archibald Richardson graduated from Imperial College London and then taught at the college. He was badly wounded in World War I. He became Professor of Mathematics at Swansea. His main interests were in algebra.

*More details at:*

[http://www-history.mcs.st-and.ac.uk/Biographies/Richardson\\_Archibald.html](http://www-history.mcs.st-and.ac.uk/Biographies/Richardson_Archibald.html)

### **Herbert Richmond**

Born 1863 at Tottenham, Middlesex; Died 1948

EMS membership: 1915 1930 (Hon)

Herbert Richmond studied at Cambridge and spent his whole career there. His main interest was in Algebraic Geometry. He became an honorary member of the EMS in 1930.

*More details at:*

<http://www-history.mcs.st-and.ac.uk/Biographies/Richmond.html>



### **Richard Robb**

Born 1901 at Glasgow; Died 1977

EMS membership: 1925

Richard Robb studied at Glasgow and Michigan universities. Most of his career was spent at Glasgow University lecturing on Mathematics and Statistics. He became President of the EMS in 1934.

*More details at:*

<http://www-history.mcs.st-and.ac.uk/Biographies/Robb.html>

### **Howard Percy Robertson**

Born 1903 at Hoquiam, Washington, USA; Died 1961  
EMS membership: 1938

Howard Percy Robertson studied at Washington University and California Institute of Technology. He spent some time in Germany and was appointed to a post in Princeton. He spent much of the period of World War II in Britain. He made important contributions to Differential Geometry and Relativity.

*More details at:*

<http://www-history.mcs.st-and.ac.uk/Biographies/Robertson.html>



### **Edward Ross**

Born 1881 at Maud, Aberdeenshire; Died 1947

EMS membership: 1903

Edward Ross studied at Edinburgh and Cambridge universities. After working with Karl Pearson in London he was appointed Professor of Mathematics at the Christian College in Madras India. Ill health forced him to retire back to Scotland.

*More details at:*

<http://www-history.mcs.st-and.ac.uk/Biographies/Ross.html>

### **Harold Ruse**

Born 1905 at Hastings; Died 1974

EMS membership: 1927

Harold Ruse graduated from Oxford and held a position at Edinburgh University. He later became a professor at Southampton and Leeds. He worked on Harmonic Spaces. He became Secretary of the EMS in 1930 and President in 1935.

*More details at:*

<http://www-history.mcs.st-and.ac.uk/Biographies/Ruse.html>

### **Daniel Rutherford**

Born 1906 at Stirling; Died 1966

EMS membership: 1930

Dan Rutherford studied at St Andrews and Amsterdam. He spent most of his career in St Andrews becoming Gregory Professor of Applied Mathematics. In spite of this title most of his research was in pure mathematics and in particular in algebra. He became President of the EMS in 1940 and 1963.

*More details at:*

<http://www-history.mcs.st-and.ac.uk/Biographies/Rutherford.html>



### **Alexander Durie Russell**

Born 1872 at Edinburgh; Died 1955

EMS membership: 1897

Alexander Durie Russell graduated from Edinburgh University at taught at Morelands School Edinburgh, at Stranraer High School and at Falkirk High School where he spent 38 years. He became Treasurer of the EMS in 1909 and President in 1915.

*More details at:*

[http://www-history.mcs.st-and.ac.uk/Biographies/Russell\\_A\\_D.html](http://www-history.mcs.st-and.ac.uk/Biographies/Russell_A_D.html)

### **Robert Schlapp**

Born 1899 at Edinburgh; Died 1991

EMS membership: 1923

Robert Schlapp studied at Edinburgh and Cambridge universities. He spent his whole career at Edinburgh University teaching mathematics and Physics. He was also interested in the History of Mathematics. He became President of the EMS in 1942 and 1943.

*More details at:*

<http://www-history.mcs.st-and.ac.uk/Biographies/Schlapp.html>

### **Agnes Scott**

Born 1894 at Jersey

EMS membership: 1917

Agnes Scott graduated from Edinburgh University. She went on to teach at Raffles' Girls School in Singapore.

*More details at:*

[http://www-history.mcs.st-and.ac.uk/Biographies/Scott\\_Agnes.html](http://www-history.mcs.st-and.ac.uk/Biographies/Scott_Agnes.html)

### **Charlotte Angas Scott**

Born 1858 at Lincoln; Died 1931

EMS membership: 1897

Charlotte Angas Scott studied at Cambridge but was not allowed to take her degree. After graduate work at Cambridge she became the first Head of Mathematics at Bryn Mawr College in Pennsylvania USA.

*More details at:*

<http://www-history.mcs.st-and.ac.uk/Biographies/Scott.html>



### **Robert Scott**

Born 1849 at Leith, near Edinburgh; Died 1933

EMS membership: 1884

Robert Scott studied at Cambridge and was elected to a fellowship. After a short time teaching he studied to be a barrister. He spent most of his career as Bursar and Master of St John's College Cambridge. He published a book on Determinants.

*More details at:*

[http://www-history.mcs.st-and.ac.uk/Biographies/Scott\\_Robert.html](http://www-history.mcs.st-and.ac.uk/Biographies/Scott_Robert.html)

### **T J J See**

Born 1866 at Montgomery City, Missouri; Died 1962

EMS membership: 1916

T J J See was an American astronomer who studied in the University of Missouri and in Berlin. He fell out with his astronomical colleagues and was eventually banned from publishing. He spend the last part of his life arguing against Einstein's Theory of Relativity.

*More details at:*

<http://www-history.mcs.st-and.ac.uk/Biographies/See.html>

### **John Semple**

Born 1904 at Belfast, Ireland; Died 1985

EMS membership: 1930

John Semple studied at Queen's University Belfast and Cambridge. He held a post in Edinburgh for a year before becoming Professor of Pure Mathematics at Queen's College Belfast. He moved to King's College London where he spent the rest of his career. His most important work was in Algebraic geometry.

*More details at:*

<http://www-history.mcs.st-and.ac.uk/Biographies/Semple.html>



### **William Sheppard**

Born 1863 at Sydney, New South Wales, Australia; Died 1936

EMS membership: 1926

William Sheppard read Mathematics at Cambridge and then went on to study Law. He was appointed to the Department of Education. His mathematical interests were mainly in Statistics.

*More details at:*

<http://www-history.mcs.st-and.ac.uk/Biographies/Sheppard.html>

### **Mary Simpson**

Born 1901 at Gateshead-on-Tyne

EMS membership: 1923

Mary Simpson graduated from Edinburgh and then took up a post at Queen's College Dundee.

*More details at:*

[http://www-history.mcs.st-and.ac.uk/Biographies/Simpson\\_Mary.html](http://www-history.mcs.st-and.ac.uk/Biographies/Simpson_Mary.html)

### **Glenny Smeal**

Born 1890 at Australia

EMS membership: 1914

Glenny Smeal studied at Melbourne University and Imperial College London. After some time in Edinburgh he moved to a post in Statistical Methods and Computation at Leeds.

*More details at:*

<http://www-history.mcs.st-and.ac.uk/Biographies/Smeal.html>

### **John Smith**

Born 1906 at Kilmarnock; Died 1962

EMS membership: 1928

John Smith graduated from Glasgow University and then stayed on as a lecturer. He taught at Campbeltown Grammar School and Dollar Academy and then became an HM Schools Inspector.

*More details at:*

[http://www-history.mcs.st-and.ac.uk/Biographies/Smith\\_John.html](http://www-history.mcs.st-and.ac.uk/Biographies/Smith_John.html)

### **Duncan Sommerville**

Born 1879 at Beawar, Rajasthan, India; Died 1934

EMS membership: 1903

Duncan Sommerville studied at St Andrews and then had a post as a lecturer there. He left to become Professor of Pure and Applied mathematics at Victoria College, Wellington New Zealand. He worked on non-Euclidean geometry and the History of Mathematics. He became President of the EMS in 1911.

*More details at:*

<http://www-history.mcs.st-and.ac.uk/Biographies/Sommerville.html>



### **Thomas Bond Sprague**

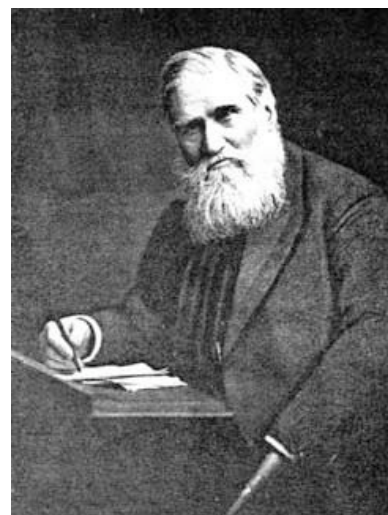
Born 1830 at London; Died 1920

EMS membership: 1884

Thomas Bond Sprague studied at Cambridge and went on to become the most important actuary of the late 19th Century. He wrote more than 100 papers including many in the *Proceedings* of the EMS.

*More details at:*

<http://www-history.mcs.st-and.ac.uk/Biographies/Sprague.html>



### **Catherine Steele**

Born 1903 at West Calder, West Lothian

EMS membership: 1925

Catherine Steele graduated from the University of St Andrews. She went on to a doctorate in Chemistry and studied at the University of Illinois and at Harvard. She taught for some time at a Horticultural College in Kent before returning to the USA.

*More details at:*

<http://www-history.mcs.st-and.ac.uk/Biographies/Steele.html>

### **John Steggall**

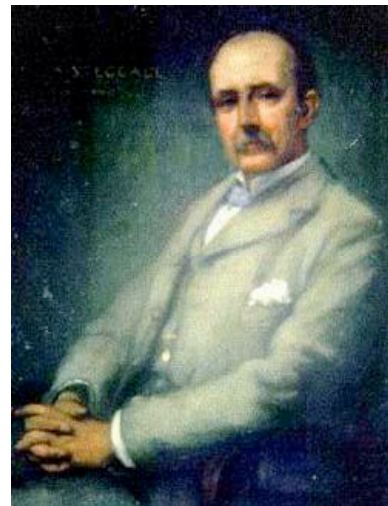
Born 1855 at London; Died 1935

EMS membership: 1888

John Steggall graduated from Cambridge and then taught at Clifton College Bristol and Owens College Manchester. He was appointed to be the first Professor of Mathematics at the newly-formed University College Dundee: soon to become Queen's College and part of the University of St Andrews. He held this post for 50 years. He became President of the EMS in 1891 and 1924.

*More details at:*

<http://www-history.mcs.st-and.ac.uk/Biographies/Steggall.html>



### **P G Tait**

Born 1831 at Dalkeith, Midlothian; Died 1901

EMS membership: 1883 (Hon)

Peter Guthrie Tait was a fellow-pupil of Maxwell at Edinburgh Academy and both of them went on to study at Edinburgh University and Cambridge. Tait became Professor of Mathematics at Queen's College Belfast and then moved to the Chair of Natural Philosophy at Edinburgh which he occupied for more than 40 years. With his collaborations with Maxwell, Thomson (Lord Kelvin) and Hamilton he made important contributions in both mathematics and physics. He became one of the first honorary members of the EMS in 1883.



*More details at:*

<http://www-history.mcs.st-and.ac.uk/Biographies/Tait.html>

### **J A Third**

Born 1865 at St Nicholas, Aberdeen; Died 1948

EMS membership: 1897

J A Third graduated from Aberdeen and became Rector of Campbeltown Grammar School and later headmaster of Spier's School in Beith. He went on to become Director of Education for Ayrshire. A prize at the University of Aberdeen is named after him. He became President of the EMS in 1902.

*More details at:*

<http://www-history.mcs.st-and.ac.uk/Biographies/Third.html>

### **George Thom**

Born 1842 at Forgue near Huntly; Died 1916

EMS membership: 1883

George Thom graduated from Aberdeen and then became Principal of Doveton College in Madras, India. He returned to Scotland as Vice-Principal of Chanonry School Aberdeen and then became Rector of Dollar Institution (later to become Dollar Academy). He held this post for 24 years. He was a founder member of the EMS and became the fifth President in 1886.



*More details at:*

[http://www-history.mcs.st-and.ac.uk/Biographies/Thom\\_George.html](http://www-history.mcs.st-and.ac.uk/Biographies/Thom_George.html)



### **D'Arcy Thompson**

Born 1860 at Edinburgh; Died 1948

EMS membership: 1933 (Hon)

D'Arcy Thompson graduated from Cambridge University in Zoology. He was appointed Professor of Biology at Dundee and later Professor of Natural History at St Andrews. He combined skills in a way that made him unique. He was a Greek scholar, a naturalist and a mathematician. He was the first biomathematician. He became an honorary member of the EMS in 1933.

*More details at:*

[http://www-history.mcs.st-and.ac.uk/Biographies/Thompson\\_D'Arcy.html](http://www-history.mcs.st-and.ac.uk/Biographies/Thompson_D'Arcy.html)



### **William Thomson**

Born 1856 at Kirkton of Mailler, Perthshire; Died 1947

EMS membership: 1888

William Thomson graduated from Edinburgh University and then became assistant to Chrystal there. He was appointed Professor of Mathematics at Victoria College Stellenbosch in South Africa. He became Registrar at the University of the Cape of Good Hope and later at the University of Witwatersrand in Johannesburg. He finished his career as Principal of the University of South Africa in Pretoria.

*More details at:* [http://www-history.mcs.st-and.ac.uk/Biographies/Thomson\\_William.html](http://www-history.mcs.st-and.ac.uk/Biographies/Thomson_William.html)

### **William Leslie Thomson**

Born 1868 at Selkirk; Died 1951

EMS membership: 1897

William Leslie Thomson studied at Edinburgh and Cambridge. He taught at Kirkwall, at Kilmarnock and at George Heriot's School in Edinburgh. He became President of the EMS in 1904.

*More details at:* [http://www-history.mcs.st-and.ac.uk/Biographies/Thomson\\_W\\_L.html](http://www-history.mcs.st-and.ac.uk/Biographies/Thomson_W_L.html)

### **Geoffrey Timms**

Born 1903 at Bradford, Yorkshire; Died 1982

EMS membership: 1929

Geoffrey Timms studied at Leeds and Cambridge and then took up a post at St Andrews. During World War II he served at Bletchley Park and Cheltenham and joined the Foreign Office afterwards. He became President of the EMS in 1941.

*More details at:*

<http://www-history.mcs.st-and.ac.uk/Biographies/Timms.html>

### **John Todd**

Born 1908 at Liverpool; Died 1994

EMS membership: 1935

John Todd graduated from Cambridge and stayed on to do research under Baker. After a period at Manchester and Princeton he returned to Cambridge where he spent the rest of his career. He worked on invariant theory, group theory and canonical systems.

*More details at:*

<http://www-history.mcs.st-and.ac.uk/Biographies/Todd.html>



### **Herbert Turnbull**

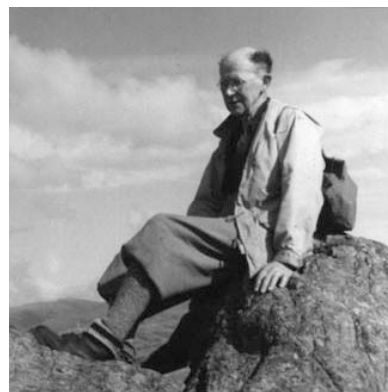
Born 1885 at Tettenhall, Wolverhampton; Died 1961

EMS membership: 1922 1954 (Hon)

Herbert Turnbull graduated from Cambridge and then taught at Cambridge, Liverpool and Hong Kong. After a period as a schoolteacher in England and as a Schools Inspector he went to Oxford before being appointed Regius Professor of Mathematics at St Andrews. He held this post for nearly 30 years. He was interested in Invariant Theory and in the History of Mathematics. He became President of the EMS in 1933 and 1950 and an honorary member in 1954.

*More details at:*

<http://www-history.mcs.st-and.ac.uk/Biographies/Turnbull.html>



### **John Turner**

Born 1871 at Bridge-of-Weir (near Glasgow), Scotland; Died 1948

EMS membership: 1894

John Turner graduated from the university of Edinburgh and taught at the Royal High School of Edinburgh. He was an active member of the EMS. He was editor of the *Proceedings* and became Treasurer of the EMS in 1905.

*More details at:* [http://www-history.mcs.st-and.ac.uk/Biographies/Turner\\_John.html](http://www-history.mcs.st-and.ac.uk/Biographies/Turner_John.html)

### **Charles Tweedie**

Born 1868 at Swinton, Berwickshire; Died 1925

EMS membership: 1892 1915 (Hon)

Charles Tweedie studied at Edinburgh, Göttingen and Berlin. He returned to Edinburgh as assistant to Chrystal. He served as a Schools Inspector and published works on the History of Mathematics. He became President of the EMS in 1903 and an honorary member in 1915.

*More details at:*

<http://www-history.mcs.st-and.ac.uk/Biographies/Tweedie.html>

### **David Tweedie**

Born 1865 at Swinton, Berwickshire

EMS membership: 1892

David Tweedie graduated from Edinburgh University and taught at George Watson's College in Edinburgh. He spent more than 30 years teaching in various institutions in Egypt. He became Treasure of the EMS in 1895.

*More details at:*

[http://www-history.mcs.st-and.ac.uk/Biographies/Tweedie\\_David.html](http://www-history.mcs.st-and.ac.uk/Biographies/Tweedie_David.html)

### **David J Tweedie**

Born 1870 at Edinburgh; Died 1926

EMS membership: 1897

David J Tweedie graduated with an Ordinary degree from Edinburgh University and then taught at George Heriot's Hospital School in Edinburgh. He became headmaster of the school at Kilconquhar in Fife.

*More details at:*

[http://www-history.mcs.st-and.ac.uk/Biographies/Tweedie\\_D\\_J.html](http://www-history.mcs.st-and.ac.uk/Biographies/Tweedie_D_J.html)

### **Geoffrey Walker**

Born 1909 at Watford, Hertfordshire; Died 2001

EMS membership: 1931

Geoffrey Walker studied at Oxford and Edinburgh. He taught at Imperial College London, Liverpool and Sheffield before returning to Liverpool as Professor of Pure Mathematics. He worked on Differential Geometry, Relativity and Cosmology.

*More details at:*

[http://www-history.mcs.st-and.ac.uk/Biographies/Walker\\_Arthur.html](http://www-history.mcs.st-and.ac.uk/Biographies/Walker_Arthur.html)



### **G Neville Watson**

Born 1886 at Westward Ho!, Devon; Died 1965

EMS membership: 1914

Neville Watson studied at Cambridge, and then taught at Cambridge and University College London before becoming Professor at Birmingham. He is best known as the joint author with Whittaker of one of the standard text-books on Analysis.

*More details at:*

<http://www-history.mcs.st-and.ac.uk/Biographies/Watson.html>



### **William Watson**

Born 1884 at Musselburgh, East Lothian; Died 1952

EMS membership: 1913

William Watson graduated in Mathematics and Physics from Edinburgh University. He became head of the Physics department at Heriot Watt College in Edinburgh.

*More details at:*

[http://www-history.mcs.st-and.ac.uk/Biographies/Watson\\_William.html](http://www-history.mcs.st-and.ac.uk/Biographies/Watson_William.html)

### **James Watt**

Born 1863 at Scotland; Died 1945

EMS membership: 1927

James Watt was an Edinburgh lawyer and actuary. He was interested in science, being a member of the Scottish Meteorological Society and the Royal Scottish Geographical Society as well as the EMS.

*More details at:*

<http://www-history.mcs.st-and.ac.uk/Biographies/Watt.html>

### **James Wattie**

Born 1862 at Aberdeen; Died 1943

EMS membership: 1889

James Wattie studied at Aberdeen and Oxford. He taught for a while at George Watson's College in Edinburgh and the Church of Scotland Training College in Aberdeen before becoming a Schools Inspector.

*More details at:*

<http://www-history.mcs.st-and.ac.uk/Biographies/Wattie.html>

### **K K Weatherhead**

Born 1898 at Glasgow; Died 1979

EMS membership: 1925

K K Weatherhead graduated from Edinburgh University although his studies were interrupted by service in World War I. He became an actuary, working for various Edinburgh insurance companies.

*More details at:*

<http://www-history.mcs.st-and.ac.uk/Biographies/Weatherhead.html>

### **Joseph Wedderburn**

Born 1882 at Forfar, Angus; Died 1948

EMS membership: 1902 1946 (Hon)

Joseph Wedderburn studied at Edinburgh, Leipzig, Berlin and Chicago. He returned to Scotland to work at Edinburgh but then moved to a post at Princeton where he spent the rest of his career except for a break for service in World War I. He made far-reaching discoveries in the theory of rings, algebras and matrices. He became an honorary member of the EMS in 1946.

*More details at:*

<http://www-history.mcs.st-and.ac.uk/Biographies/Wedderburn.html>



### **Edmund Whittaker**

Born 1873 at Southport, Lancashire; Died 1956

EMS membership: 1912 1937 (Hon)

Edmund Whittaker graduated from Cambridge and stayed on with a fellowship. He became Royal Astronomer of Ireland and moved to Dublin before being appointed to the Chair of Mathematics at Edinburgh where he spent the rest of his career. His best known work is in analysis, in particular numerical analysis, but he also worked on celestial mechanics and the history of applied mathematics and physics. He became President of the EMS in 1914 and an honorary member in 1937.

*More details at:*

<http://www-history.mcs.st-and.ac.uk/Biographies/Whittaker.html>



### **John Whittaker**

Born 1905 at Cambridge; Died 1984

EMS membership: 1925

John Whittaker was the son of Edmund Whittaker. He studied at Edinburgh University and Cambridge. After posts at Edinburgh and Cambridge he became Professor at Liverpool though his tenure was interrupted by service in World War II. He left Liverpool to become Vice-Chancellor of Sheffield University. He worked in Quantum Mechanics and Complex Analysis.

*More details at:*

[http://www-history.mcs.st-and.ac.uk/Biographies/Whittaker\\_John.html](http://www-history.mcs.st-and.ac.uk/Biographies/Whittaker_John.html)



### **John Williamson**

Born 1901 at Kinross; Died 1949

EMS membership: 1924

John Williamson graduated from Edinburgh University and then had an appointment at St Andrews. He spent some time in Chicago and eventually moved to the USA to a post at Johns Hopkins University in Baltimore. His most important work was in Algebra.

*More details at:*

<http://www-history.mcs.st-and.ac.uk/Biographies/Williamson.html>

### **Bertram Wilson**

Born 1896 at London; Died 1935

EMS membership: 1933

Bertram Wilson graduated from Cambridge and had posts at Liverpool and Dundee. He died very young.

*More details at:*

[http://www-history.mcs.st-and.ac.uk/Biographies/Wilson\\_Bertram.html](http://www-history.mcs.st-and.ac.uk/Biographies/Wilson_Bertram.html)

### **John Wilson**

Born 1847 at Montrose, Angus; Died 1896

EMS membership: 1885

John Wilson graduated from Edinburgh University and trained as a Free Church minister. He took over the Rectorship of his father's Academy in Bannockburn but later moved to Edinburgh as a tutor in mathematics and physics. He became Treasurer of the EMS in 1888 and President in 1896.

*More details at:*

[http://www-history.mcs.st-and.ac.uk/Biographies/Wilson\\_John\\_2.html](http://www-history.mcs.st-and.ac.uk/Biographies/Wilson_John_2.html)

### **John Raymond Wilton**

Born 1884 at Belfast (Port Fairy), Victoria, Australia; Died 1944

EMS membership: 1928

John Raymond Wilton studied at Adelaide and Cambridge. He lectured at Sheffield before returning to Adelaide as a Professor. He worked in Analysis and Number Theory.

*More details at:*

<http://www-history.mcs.st-and.ac.uk/Biographies/Wilton.html>

### **Aurel Wintner**

Born 1903 at Budapest, Hungary; Died 1958

EMS membership: 1935

Aurel Wintner studied at Budapest and Leipzig. He spent most of his career in Johns Hopkins University in Baltimore, USA. He published on Number Theory, Differential Equations, Probability and Celestial Mechanics.

*More details at:*

<http://www-history.mcs.st-and.ac.uk/Biographies/Wintner.html>

### **Edward Maitland Wright**

Born 1906 at Farnley, near Leeds; Died 2005

EMS membership: 1935

Edward Maitland Wright was initially self-taught in Mathematics but was able to go and study at Oxford. He spent a year at Göttingen and returned to Oxford. He was appointed to the Chair at Aberdeen where he stayed for the rest of his career, eventually becoming Principal and Vice-Chancellor of the University. He is best known for the standard work on Number Theory he wrote with G H Hardy.



*More details at:*

<http://www-history.mcs.st-and.ac.uk/Biographies/Wright.html>

### **Andrew Young**

Born 1891 at Lanton, Jedburgh, Roxburghshire; Died 1968

EMS membership: 1913

Andrew Young graduated from Edinburgh and taught at St Andrews and London Universities. He then trained as a lawyer and worked as a solicitor in Edinburgh for the rest of his career.

*More details at:*

[http://www-history.mcs.st-and.ac.uk/Biographies/Young\\_Andrew.html](http://www-history.mcs.st-and.ac.uk/Biographies/Young_Andrew.html)

### **George Udny Yule**

Born 1871 at Morham (near Haddington); Died 1951

EMS membership: 1935

George Udny Yule graduated in Engineering from University College London and then studied in Bonn. He worked with Karl Pearson on the statistics of regression and correlation. He took a post with an examinations board before being appointed to a Cambridge fellowship. He is best known for his book: *Introduction to the Theory of Statistics*.



*More details at:*

<http://www-history.mcs.st-and.ac.uk/Biographies/Yule.html>

# Edinburgh Mathematical Society Officers

## Honorary Treasurers

1883	C G Knott
1883-1885	A Y Fraser
1885-1888	J Alison
1888-1895	J Wilson
1895-1898	D Tweedie
1898-1899	F Spence
1899-1905	J Archibald
1905-1909	J Turner
1909-1915	A D Russell
1915-1927	E M Horsburgh
1927-1950	J B Lockhart
1950-1953	L M Brown
1953-1955	J B Marshall Jr
1955-1963	W M Morrison
1963-1972	G MacKenzie
1972-1976	G F Roach
1976-1988	A C McBride
1988-1997	A D Sands
1997-2004	N K Dickson
2004-	M A Youngson

## Honorary Secretaries

1883	C G Knott
1883-1888	A Y Fraser
1888-1891	J Alison
1891-1896	J B Clerk
1896-1899	J W Butters
1899-1904	D C McIntosh
1904-1908	P Pinkerton
1908-1911	A G Burgess
1911-1916	P Comrie
1916-1921	P Ramsay
1921-1924	B B Baker
1924-1930	E T Copson
1930-1933	H S Ruse
1933-1938	I M H Etherington
1938-1939	J B Marshall
1939-1944	I M H Etherington
1944-1947	J B Marshall
1947-1953	R Smart
1953-1960	J Fulton
1960-1974	J L Mott
1971-1980	J D P Meldrum
1974-1983	T A Gillespie
1980-1993	J Martin
1983-1992	C J Shaddock
1992-2003	P Heywood
1993-2000	C J Smyth
2000-	A D Gilbert
2003-	T H Lenagan